

view assets on map

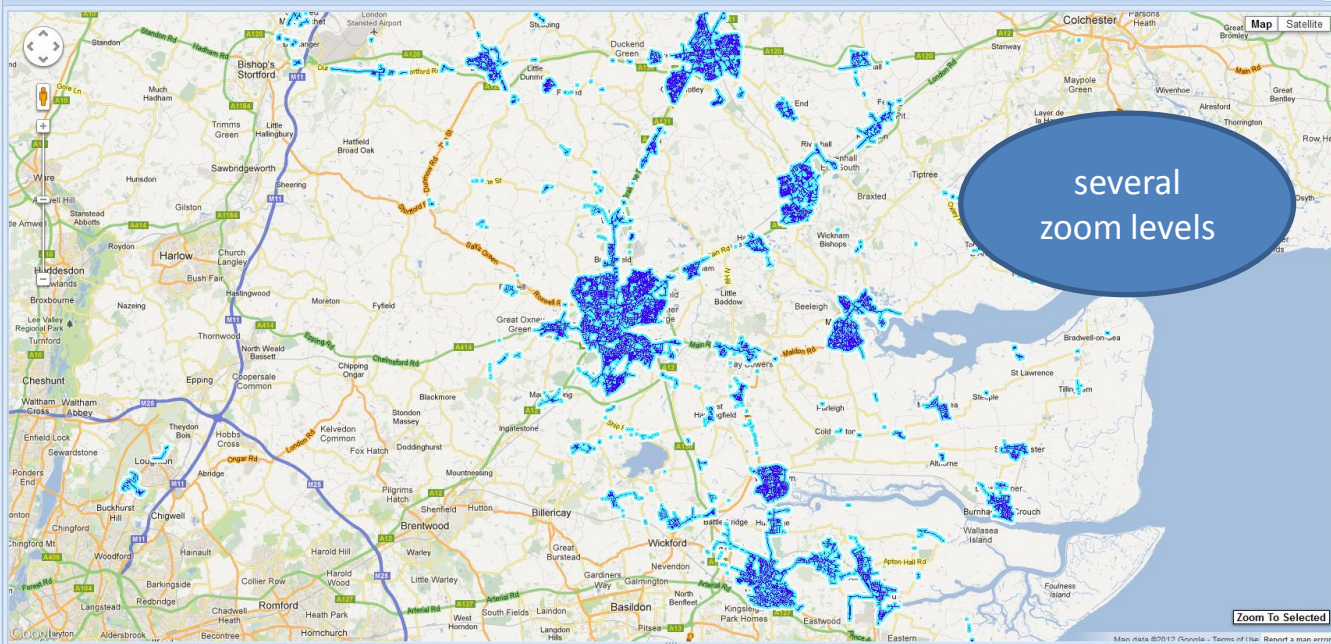
shows all assets over wide area

Zoom To Selected

- PLANet
- Home
- Log out
- Status
- Tasks
- Lightmeters
- Readings
- Assets Configuration
 - Override Switching Groups
 - Assets
 - Asset details
 - Asset programs
 - Relays
 - Programs
 - Lamp Types
 - Global Configuration
- Edit Assets Configuration
- Polling
- Override Switching
- Basestations
- Telecells
- System Management
- Telensa

Asset details

Grid layout | Hide Map | Refresh | Asset status: active, inactive | Clear filters | Export



several zoom levels

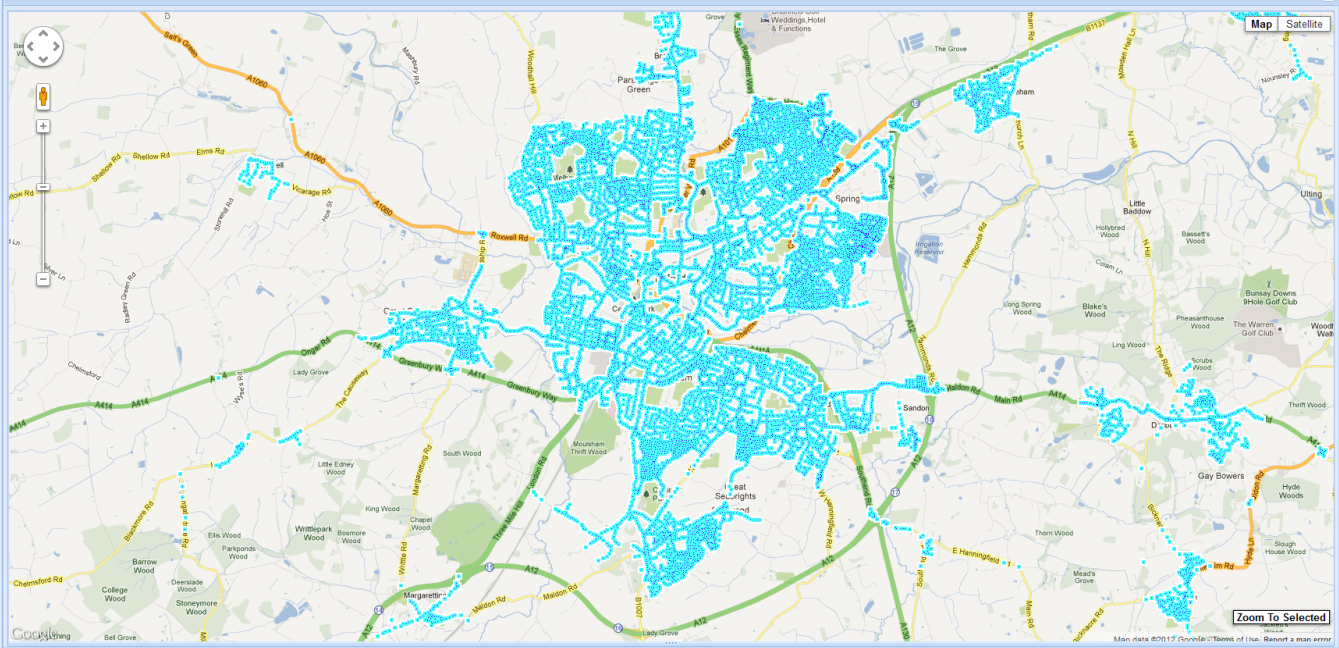
No data to display

Zoom To Selected

- PLANet
- Home
- Log out
- Status
- Tasks
- Lightmeters
- Readings
- Assets Configuration
 - Override Switching Groups
 - Assets
 - Asset details
 - Asset programs
 - Relays
 - Programs
 - Lamp Types
 - Global Configuration
- Edit Assets Configuration
- Polling
- Override Switching
- Basestations
- Telecells
- System Management
- Telensa

Asset details

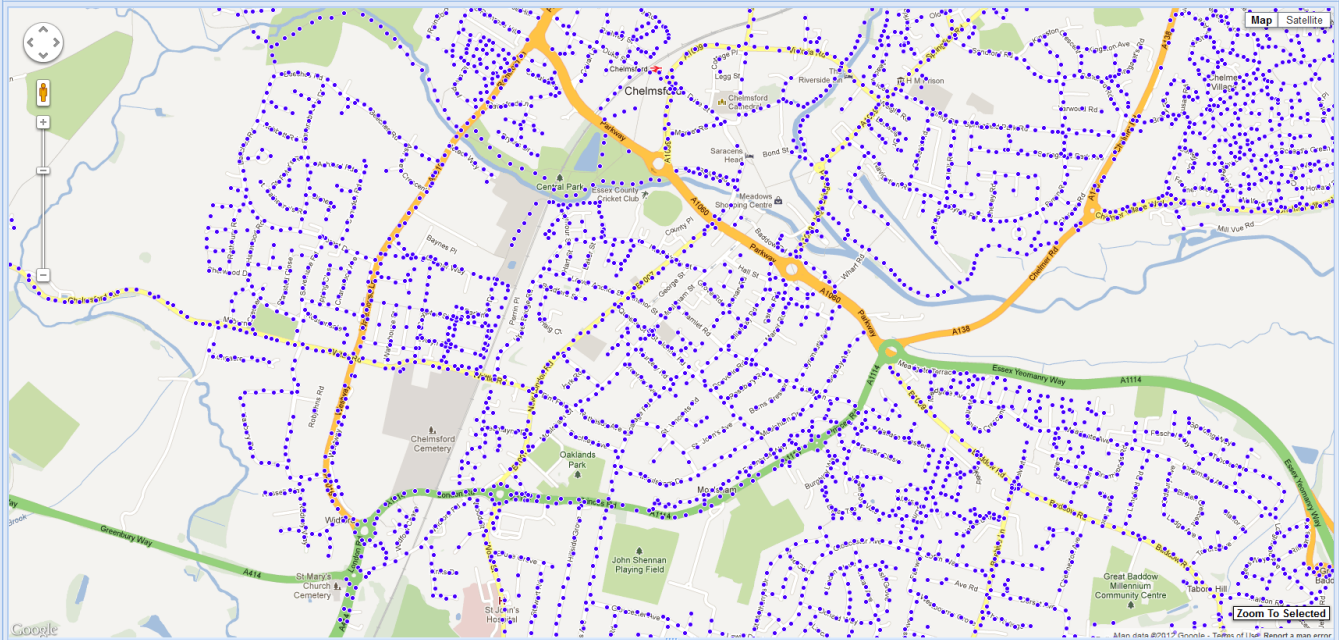
Grid layout | Hide Map | Refresh | Asset status: active, inactive | Clear filters | Export



- PLANet
- Home
- Log out
- Status
- Tasks
- Lightmeters
- Readings
- Assets Configuration
 - Override Switching Groups
 - Assets
 - Asset details
 - Asset programs
 - Relays
 - Programs
 - Lamp Types
 - Global Configuration
- Edit Assets Configuration
- Polling
- Override Switching
- Basestations
- Telecells
- System Management
- Telensa

Asset details

Grid layout | Hide Map | Refresh | Asset status: active, inactive | Clear filters | Export

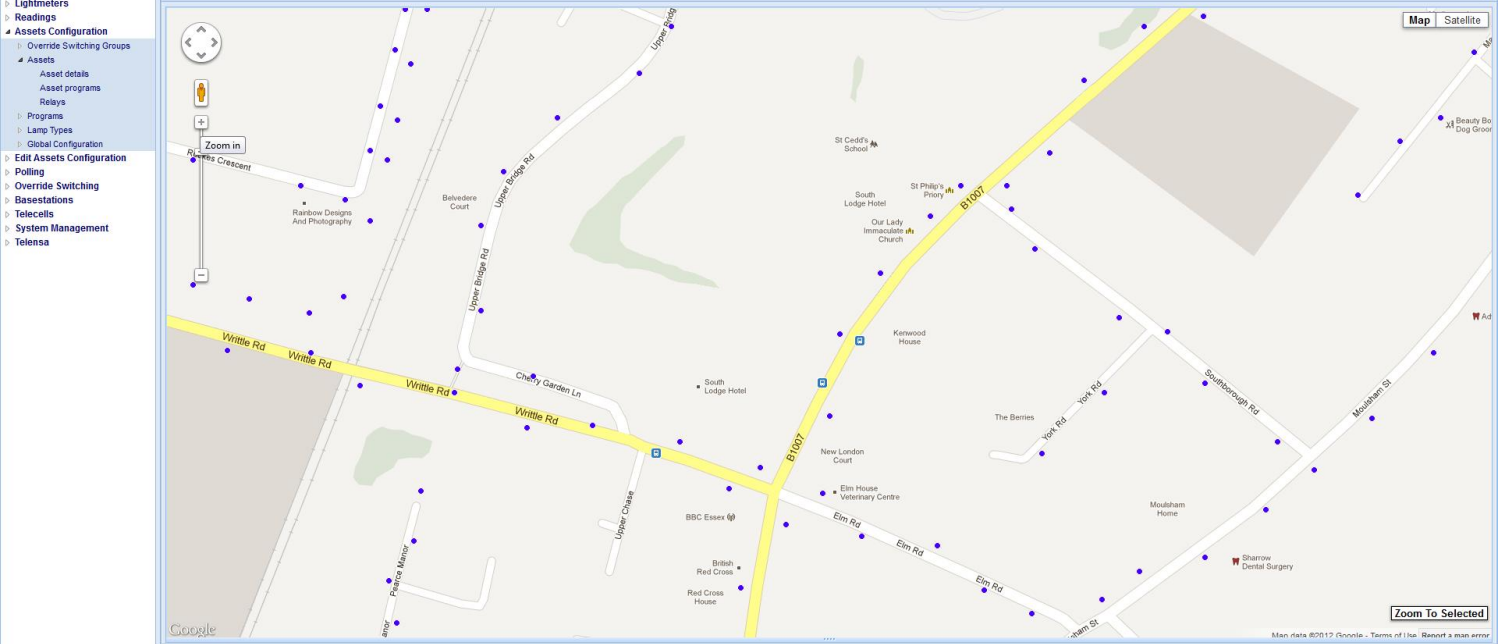


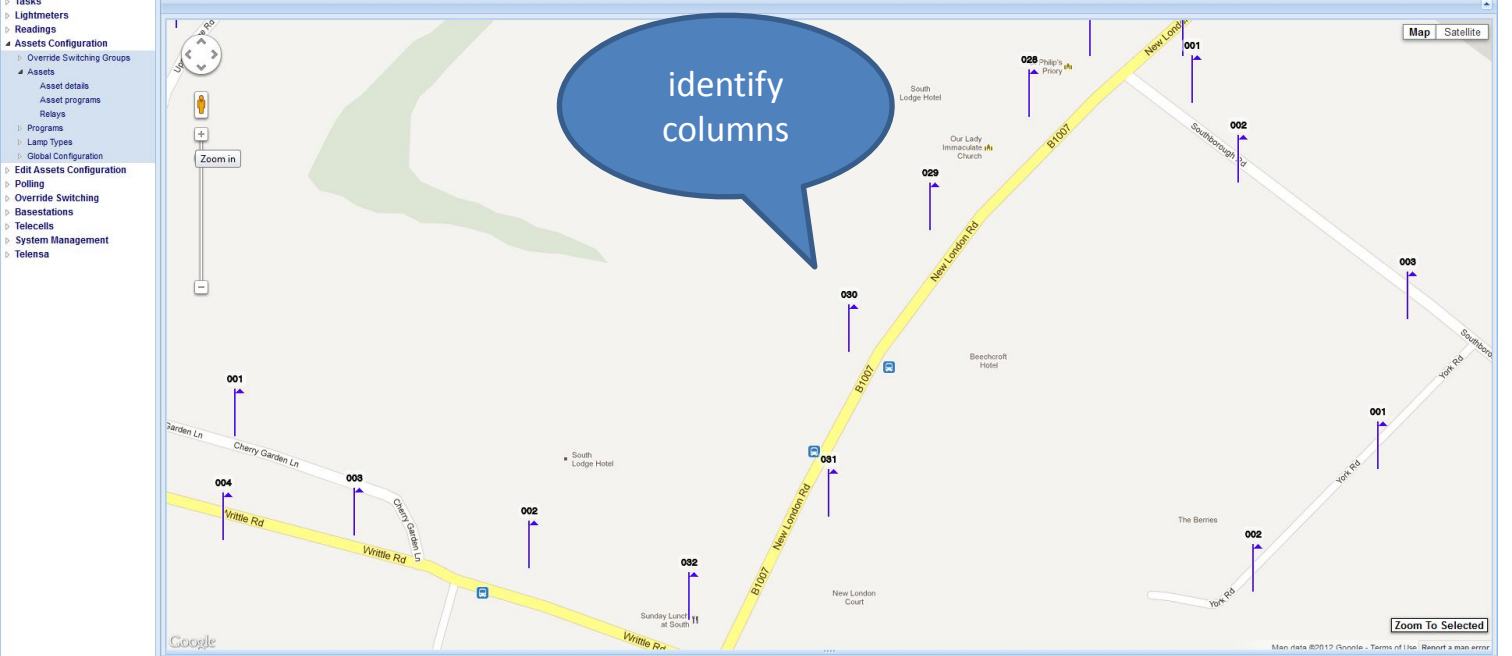
No data to display

PLANet

Asset details

Grid layout | Hide Map | Refresh | Asset status: active, inactive | Clear filters | Export

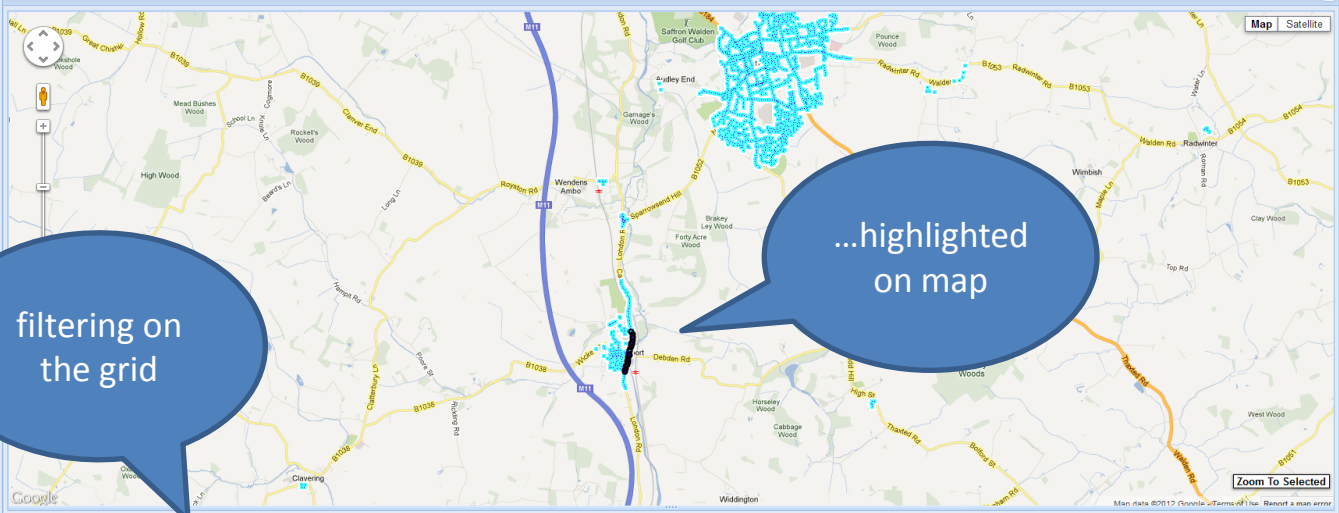




- PLANet
- Home
- Log out
- Status
- Tasks
- Lightmeters
- Readings
- Assets Configuration
 - Override Switching Groups
 - Assets
 - Asset details
 - Asset programs
 - Relays
 - Programs
 - Lamp Types
 - Global Configuration
 - Edit Assets Configuration
 - Polling
 - Override Switching
 - Basestations
 - Telecells
 - System Management
 - Telensa

Asset details

Grid layout | Hide Map | Refresh | Asset status: active, inactive | Clear filters | Export

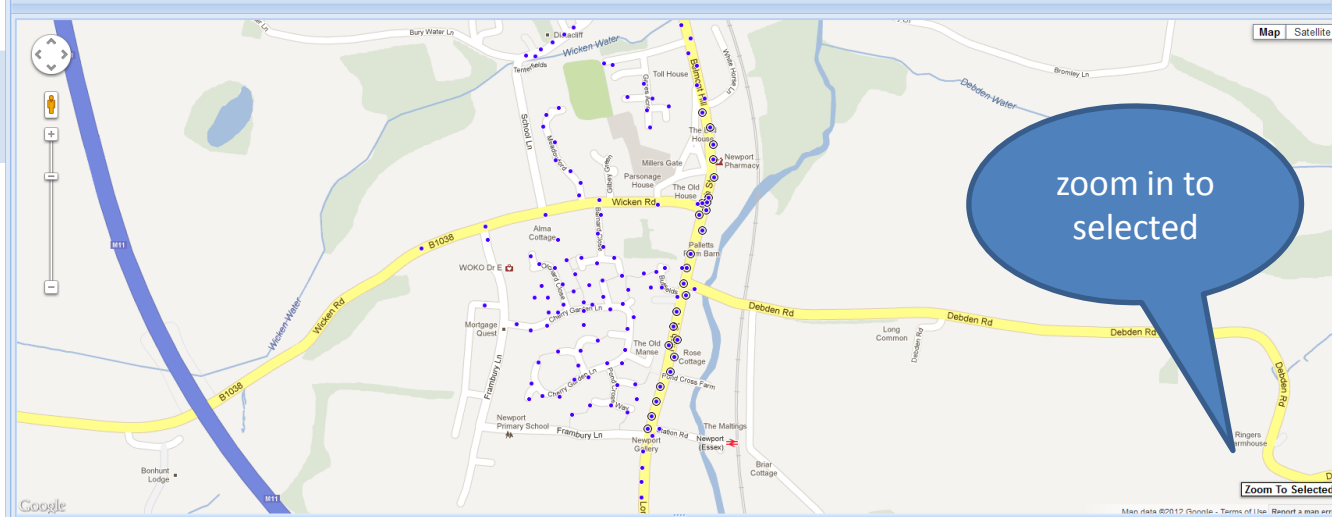


Asset ID	Element ID	Street	Unit No	Location	Additional info.	Telecell ID
1	269163	HIGH STREET	29	NEWPORT	OPPOSITE THE WHITE HORS...	0002282612
2	269164	HIGH STREET	30	NEWPORT	O/S NEWPORT YOUTH CENT...	0002284464
3	269165	HIGH STREET	31	NEWPORT	OUTSIDE ELMHURST	0002284297
4	269166	HIGH STREET	32	NEWPORT	OPPOSITE NEWPORT GALLE...	0002284356
5	269167	HIGH STREET	33	NEWPORT	THE BROWN HOUSE	0002284387
6	269168	HIGH STREET	34	NEWPORT	O/S THE OLD POST OFFICE	0002285243

PLANet Asset details

[Home](#) | [Log out](#) | [Status](#) | [Tasks](#) | [Lightmeters](#) | [Readings](#) | [Assets Configuration](#) | [Override Switching Groups](#) | [Assets](#) | [Asset details](#) | [Asset programs](#) | [Relays](#) | [Programs](#) | [Lamp Types](#) | [Global Configuration](#) | [Edit Assets Configuration](#) | [Polling](#) | [Override Switching](#) | [Basestations](#) | [Telecells](#) | [System Management](#) | [Telensa](#)

[Grid layout](#) | [Hide Map](#) | [Refresh](#) | **Asset status:** active, inactive | [Clear filters](#) | [Export](#)



Asset ID	Element ID	Street	Unit No	Location	Additional info.	Telecell ID
1	269163	HIGH STREET	29	NEWPORT	OPPOSITE THE WHITE HORS...	0002282612
2	269164	HIGH STREET	30	NEWPORT	O/S NEWPORT YOUTH CENT...	0002284464
3	269165	HIGH STREET	31	NEWPORT	OUTSIDE ELMHURST	0002284297
4	269166	HIGH STREET	32	NEWPORT	OPPOSITE NEWPORT GALLE...	0002284356
5	269167	HIGH STREET	33	NEWPORT	THE BROWN HOUSE	0002284387
6	269168	HIGH STREET	34	NEWPORT	O/S THE OLD POST OFFICE	0002285243

Displaying 1 - 25 of 26

Firefox | Telensa

10.4.0.23/index.html

Google

PLANet

Daily faults Summary of faults, lamp status, and event log readings.

Home
Log out
Status
System status
Daily faults
System log
PLANet
Tasks
Lightmeters
Readings
Assets Configuration
Edit Assets Configuration
Polling
Override Switching
Basestations
Telecells
System Management
Telensa

Map Satellite

view faults & warnings on map

No data to display

Map data ©2012 Google | Terms of Use | Report a map error

Zoom To Selected

MJD Development 2.9.x.Comms Room 3

Page 1 of 1

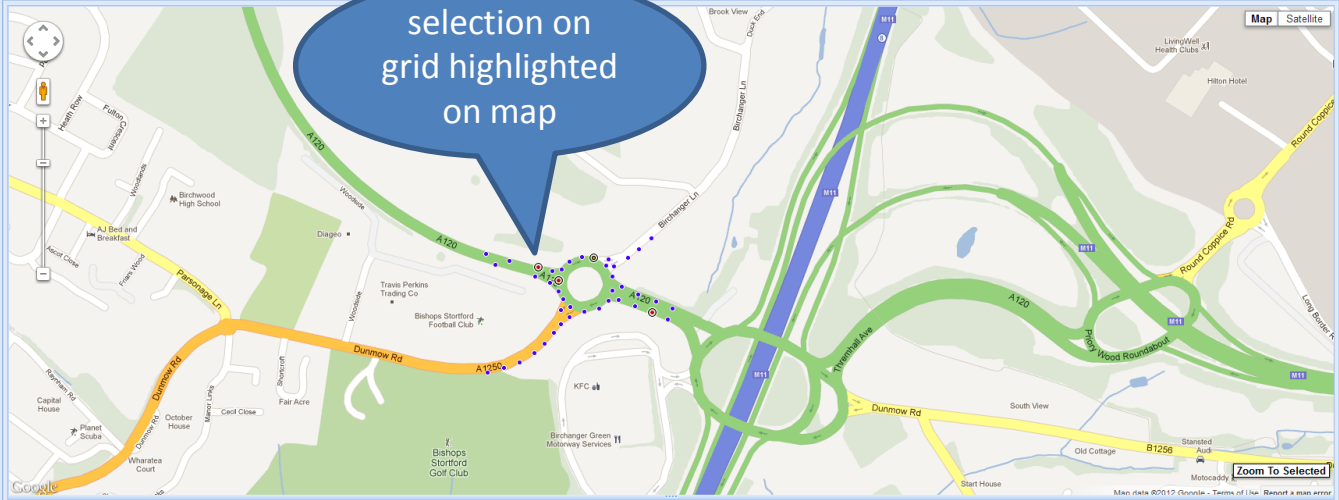
PLANet

Daily faults

Summary of all lamp, mains supply and telecell faults from lamp alarms, lamp status, and event log readings.

Home | Log out | Status | System status | Daily faults | System log | PLANet | Tasks | Lightmeters | Readings | Assets Configuration | Edit Assets Configuration | Polling | Override Switching | Basestations | Telecells | System Management | Telensa

Grid layout | Hide Map | Refresh | Clear filters | Export



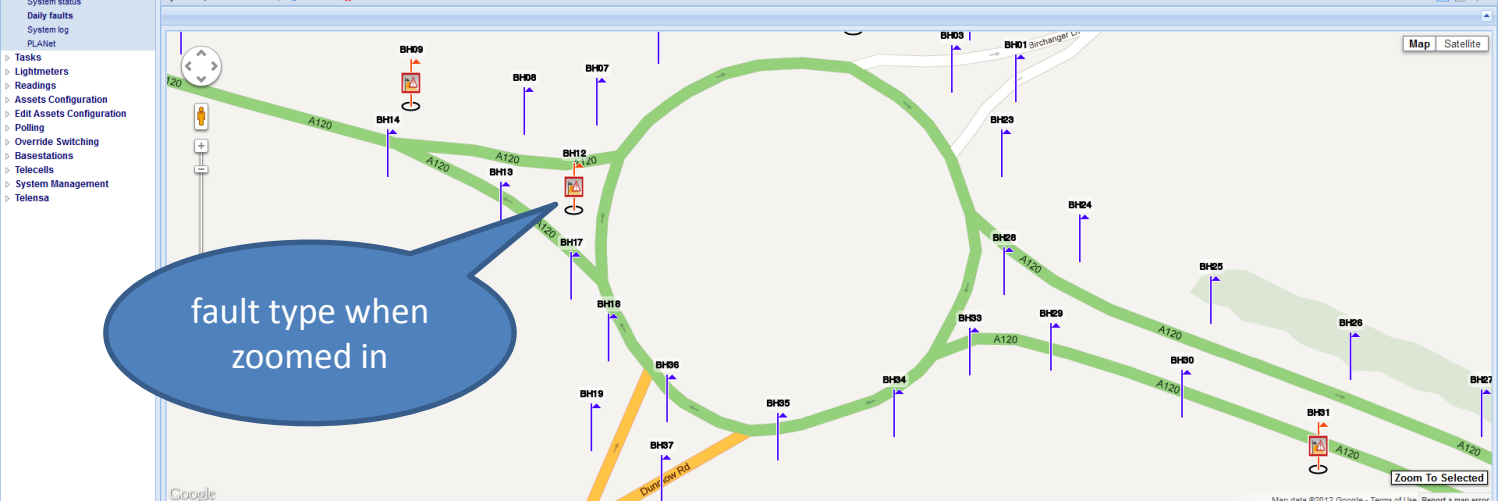
Street	Unit No	Fault period	Faults	Warnings
#A120 BYPASS		24 hours from 12:00 Mon 22-Oct-2012		
1 A120 BYPASS	BH04	Mon 22-Oct-2012		WP
2 A120 BYPASS	BH09	Mon 22-Oct-2012		
3 A120 BYPASS	BH12	Mon 22-Oct-2012		
4 A120 BYPASS	BH31	Mon 22-Oct-2012		

PLANet

Daily faults

Summary of all lamp, mains supply and telecell faults from lamp alarms, lamp status, and event log readings.

Grid layout | Hide Map | Refresh | Clear filters | Export



fault type when zoomed in

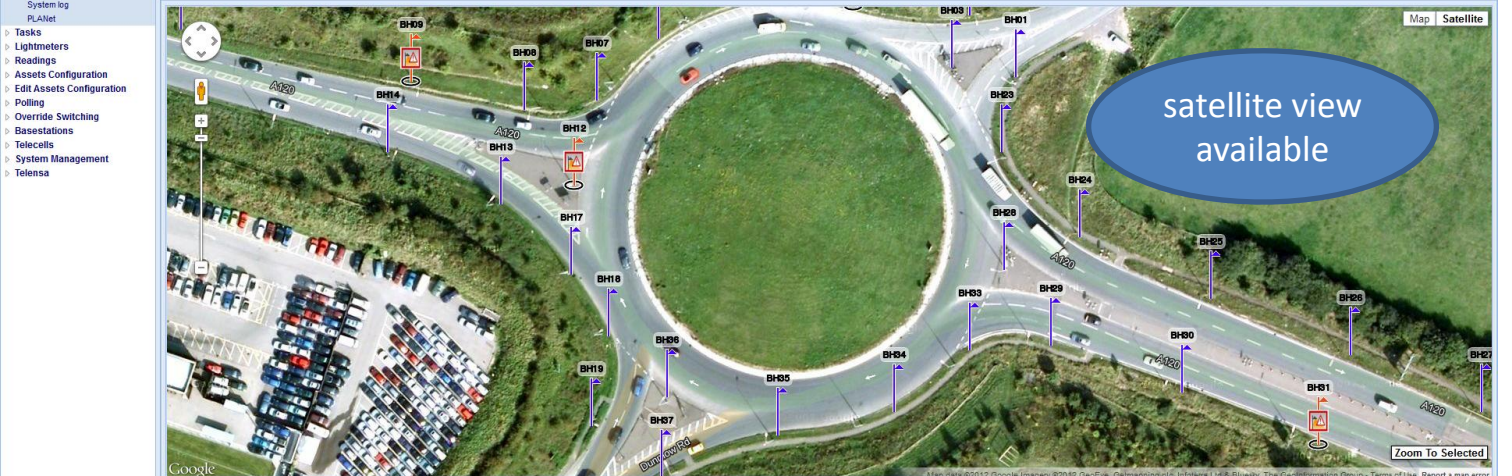
Street	Unit No	Fault period	Faults	Warnings
A120 BYPASS		24 hours from 12:00 Mon 22-Oct-2012		
1 A120 BYPASS	BH04	Mon 22-Oct-2012		
2 A120 BYPASS	BH09	Mon 22-Oct-2012		
3 A120 BYPASS	BH12	Mon 22-Oct-2012		
4 A120 BYPASS	BH31	Mon 22-Oct-2012		

PLANet

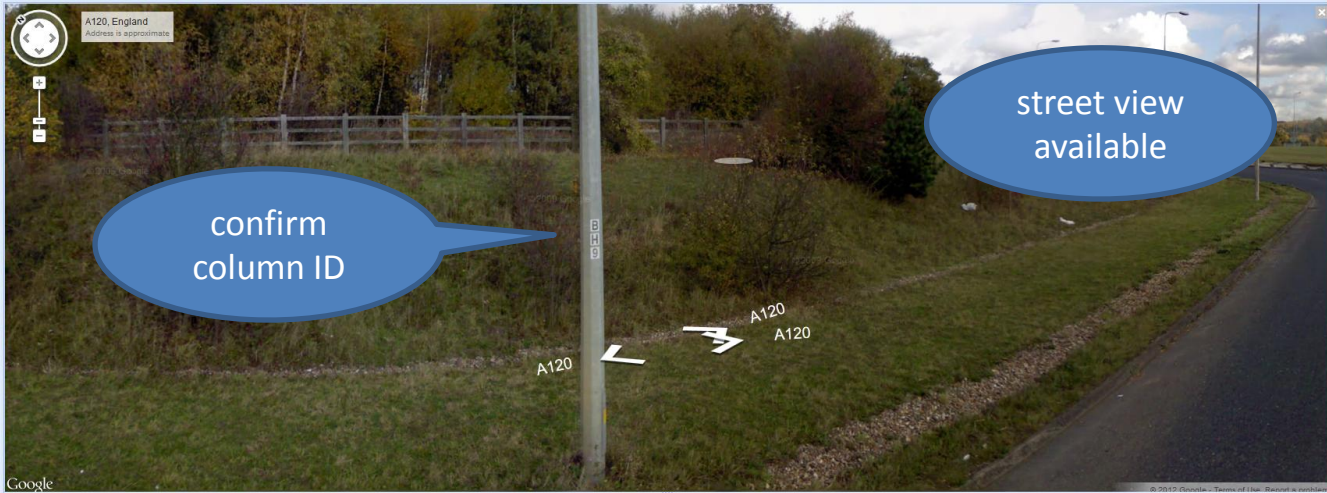
Daily faults

Summary of all lamp, mains supply and telecell faults from lamp alarms, lamp status, and event log readings.

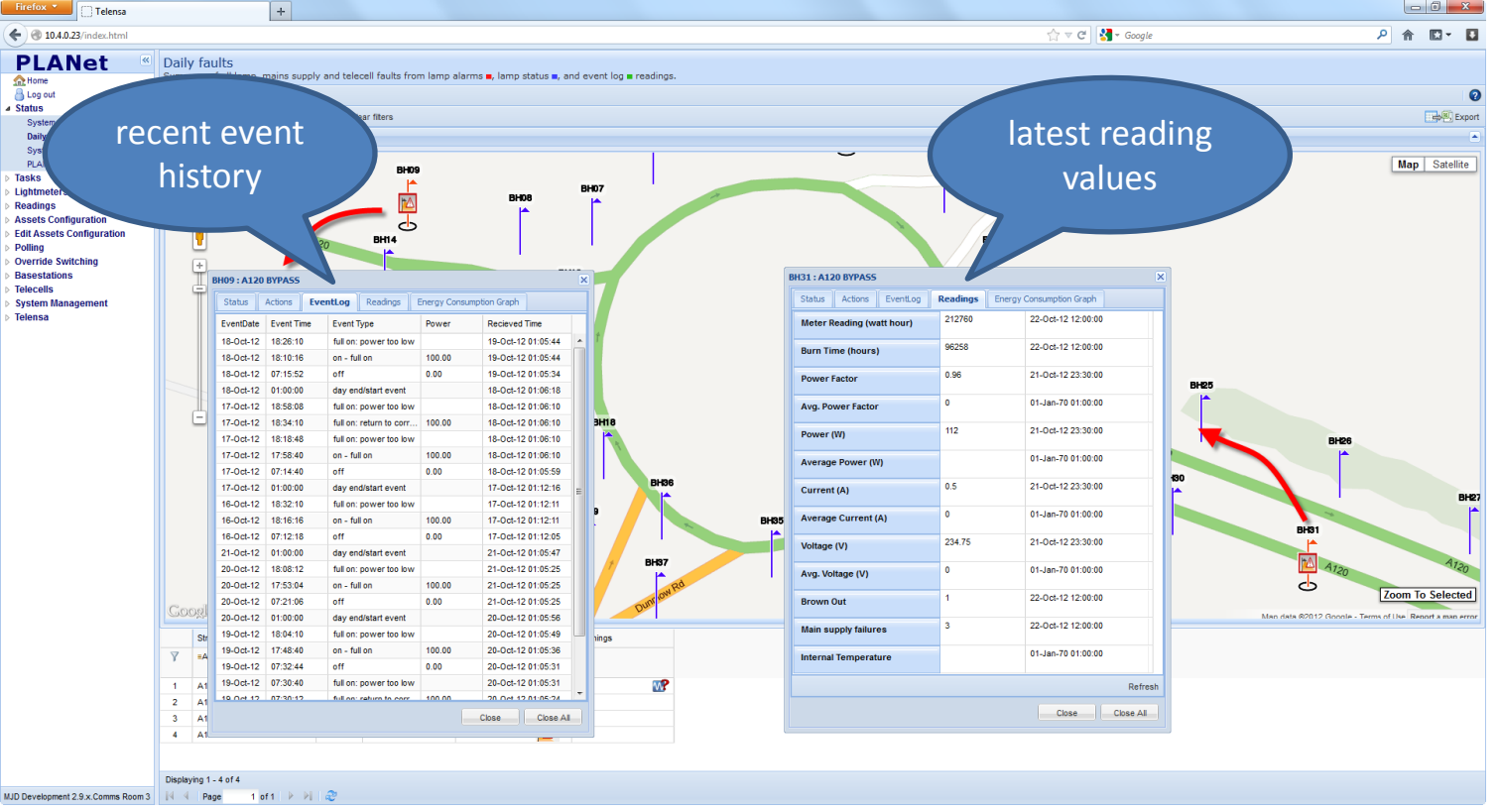
[Home](#) | [Log out](#) | [Grid layout](#) | [Hide Map](#) | [Refresh](#) | [Clear filters](#) | [Export](#)



Street	Unit No	Fault period	Faults	Warnings
#A120 BYPASS		24 hours from 12:00 Mon 22-Oct-2012		
1 A120 BYPASS	BH04	Mon 22-Oct-2012		
2 A120 BYPASS	BH09	Mon 22-Oct-2012		
3 A120 BYPASS	BH12	Mon 22-Oct-2012		
4 A120 BYPASS	BH31	Mon 22-Oct-2012		



	Street	Unit No	Fault period	Faults	Warnings
	#A120 BYPASS		24 hours from 12:00 Mon 22-Oct-2012		
1	A120 BYPASS	BH04	Mon 22-Oct-2012		WP
2	A120 BYPASS	BH09	Mon 22-Oct-2012		
3	A120 BYPASS	BH12	Mon 22-Oct-2012		
4	A120 BYPASS	BH31	Mon 22-Oct-2012		



recent event history

latest reading values

EventDate	Event Time	Event Type	Power	Received Time
18-Oct-12	18:26:10	full on: power too low		19-Oct-12 01:05:44
18-Oct-12	18:10:16	on - full on	100.00	19-Oct-12 01:05:44
18-Oct-12	07:15:52	off	0.00	19-Oct-12 01:05:34
18-Oct-12	01:00:00	day end/start event		18-Oct-12 01:06:18
17-Oct-12	18:58:08	full on: power too low		18-Oct-12 01:06:10
17-Oct-12	18:34:10	full on: return to corr...	100.00	18-Oct-12 01:06:10
17-Oct-12	18:18:48	full on: power too low		18-Oct-12 01:06:10
17-Oct-12	17:58:40	on - full on	100.00	18-Oct-12 01:06:10
17-Oct-12	07:14:40	off	0.00	18-Oct-12 01:05:59
17-Oct-12	01:00:00	day end/start event		17-Oct-12 01:12:16
16-Oct-12	18:32:10	full on: power too low		17-Oct-12 01:12:11
16-Oct-12	18:16:16	on - full on	100.00	17-Oct-12 01:12:11
16-Oct-12	07:12:18	off	0.00	17-Oct-12 01:12:05
21-Oct-12	01:00:00	day end/start event		21-Oct-12 01:05:47
20-Oct-12	18:08:12	full on: power too low		21-Oct-12 01:05:25
20-Oct-12	17:53:04	on - full on	100.00	21-Oct-12 01:05:25
20-Oct-12	07:21:06	off	0.00	21-Oct-12 01:05:25
20-Oct-12	01:00:00	day end/start event		20-Oct-12 01:05:56
19-Oct-12	18:04:10	full on: power too low		20-Oct-12 01:05:49
19-Oct-12	17:48:40	on - full on	100.00	20-Oct-12 01:05:36
19-Oct-12	07:32:44	off	0.00	20-Oct-12 01:05:31
19-Oct-12	07:30:40	full on: power too low		20-Oct-12 01:05:31
19-Oct-12	07:30:12	full on: return to corr...	100.00	20-Oct-12 01:05:24

Meter Reading (watt hour)	212760	22-Oct-12 12:00:00
Burn Time (hours)	96258	22-Oct-12 12:00:00
Power Factor	0.96	21-Oct-12 23:30:00
Avg. Power Factor	0	01-Jan-70 01:00:00
Power (W)	112	21-Oct-12 23:30:00
Average Power (W)		01-Jan-70 01:00:00
Current (A)	0.5	21-Oct-12 23:30:00
Average Current (A)	0	01-Jan-70 01:00:00
Voltage (V)	234.75	21-Oct-12 23:30:00
Avg. Voltage (V)	0	01-Jan-70 01:00:00
Brown Out	1	22-Oct-12 12:00:00
Main supply failures	3	22-Oct-12 12:00:00
Internal Temperature		01-Jan-70 01:00:00

- PLANet
- Home
- Log out
- Status
 - System status
 - Daily faults
 - System log
 - PLANet
- Tasks
- Lightmeters
- Readings
- Assets Configuration
- Edit Assets Configuration
- Polling
- Override Switching
- Basestations
- Telecells
- System Management
- Telensa

Daily faults
Summary of all lamp, mains supply and telecell faults from lamp alarms, lamp status, and

Grid layout | Hide Map | Refresh | Clear filters

recent energy consumption history

